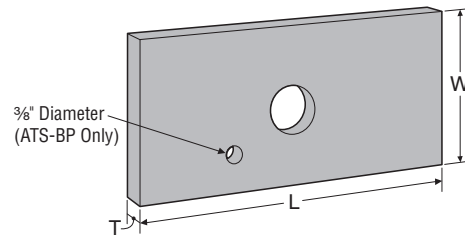


BEARING PLATES

Bearing plates are used to tie down individual levels within the system. They resist incremental bearing loads by spreading forces to minimize crushing of the wood when the system is loaded. DW plates are used when TUDs or weldable cages are specified.

Material: ASTM A36

Finish: BP – Powder Coated
DW – Powder Coated



ATS Bearing Plate

ATS Bearing Plate Specifications

Model No.	Dimensions (in)				Factored Bearing Resistance, Q_r				Colour Code
	W	L	T	Hole diam	D.Fir-L		S-P-F		
					lbs	kN	lbs	kN	
ATS-DW5	3	2 $\frac{7}{8}$	$\frac{3}{4}$	1 $\frac{1}{16}$	—	—	—	—	Blue
ATS-DW7	3	2 $\frac{7}{8}$	$\frac{3}{4}$	1 $\frac{5}{16}$	—	—	—	—	Green
ATS-DW9	3	2 $\frac{7}{8}$	$\frac{3}{4}$	1 $\frac{3}{16}$	—	—	—	—	Orange
ATS-DW10	3	2 $\frac{7}{8}$	$\frac{3}{4}$	1 $\frac{5}{16}$	—	—	—	—	Purple
ATS-BP5-3X3.5	3	3 $\frac{1}{2}$	$\frac{5}{8}$	1 $\frac{1}{16}$	10010	44.53	8810	39.19	Blue
ATS-BP5-3X5.5	3	5 $\frac{1}{2}$	$\frac{5}{8}$	1 $\frac{1}{16}$	13530	60.19	13530	60.19	Blue
ATS-BP7-3X5.5	3	5 $\frac{1}{2}$	$\frac{5}{8}$	1 $\frac{5}{16}$	15750	70.06	13360	59.43	Blue
ATS-BP9-3X5.5	3	5 $\frac{1}{2}$	$\frac{5}{8}$	1 $\frac{3}{16}$	17100	76.07	12940	57.56	Green
ATS-BP5-5X5.5	5	5 $\frac{1}{2}$	$\frac{3}{4}$	1 $\frac{1}{16}$	30730	136.70	23250	103.43	Green
ATS-BP7-5X5.5	5	5 $\frac{1}{2}$	$\frac{5}{8}$	1 $\frac{5}{16}$	27000	120.11	22910	101.91	Orange
ATS-BP9-5X5.5	5	5 $\frac{1}{2}$	$\frac{5}{8}$	1 $\frac{3}{16}$	29710	132.16	22490	100.04	Orange
ATS-BP10-3X9	3	9	1	1 $\frac{5}{16}$	22150	98.53	20420	90.84	Purple
ATS-BP10-3X12	3	12	1 $\frac{1}{2}$	1 $\frac{5}{16}$	33170	147.55	27730	123.35	Purple
ATS-BP10-3X15	3	15	1 $\frac{3}{4}$	1 $\frac{5}{16}$	33760	150.18	33760	150.18	Purple
ATS-BP10-5X9	5	9	1	1 $\frac{5}{16}$	38020	169.13	35040	155.87	Purple
ATS-BP10-5X12	5	12	1 $\frac{1}{2}$	1 $\frac{5}{16}$	56500	251.33	47230	210.10	Purple

1. Factored resistances shown are the lower of the bending capacity of the plate as per 13.5 CSA S16-01 or the bearing of the wood plates as per 5.5.7 CSA O86-01.

WELDABLE CAGE

The ATS Weldable Cage is for use on projects where the run is to be anchored to steel beams. Beam design is the responsibility of the Designer.

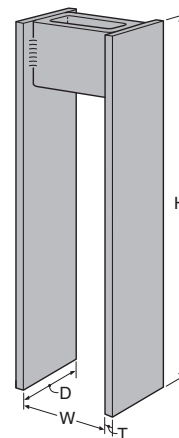
Material: Side Plates - ASTM A36; Tube - ASTM A500, Grade B

Finish: Gray Paint

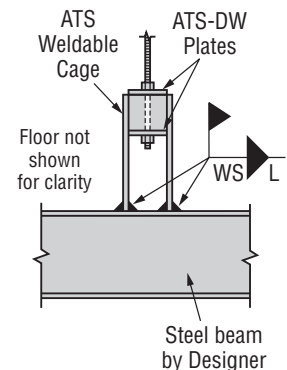
ATS Weldable Cage Capacities

Model No.	Dimensions (in)					Factored Tensile Resistance T_r	
	T	W	H	Weld Size	Weld Length	lbs	kN
ATS-1/2-2B	$\frac{3}{16}$	2	16	$\frac{3}{16}$	2	23435	104.39
ATS-1/2-2D	$\frac{1}{4}$	3	16	$\frac{1}{4}$	3	46865	208.75
ATS-1/2-2E	$\frac{3}{8}$	3	16	$\frac{1}{4}$	3	72900	324.72

1. 1" maximum rod diameter for ATS 1/2-2B cage.
- 1 $\frac{1}{8}$ " maximum rod diameter for ATS 1/2-2D and ATS 1/2-2E cages.
- Field welding to be done in accordance with CSA W59 by a welder fully licensed under CSA W47.1 using E49XX electrodes. All welding to be approved by the Designer.



Weldable Cage



Steel Beam Detail